



Company Instruction

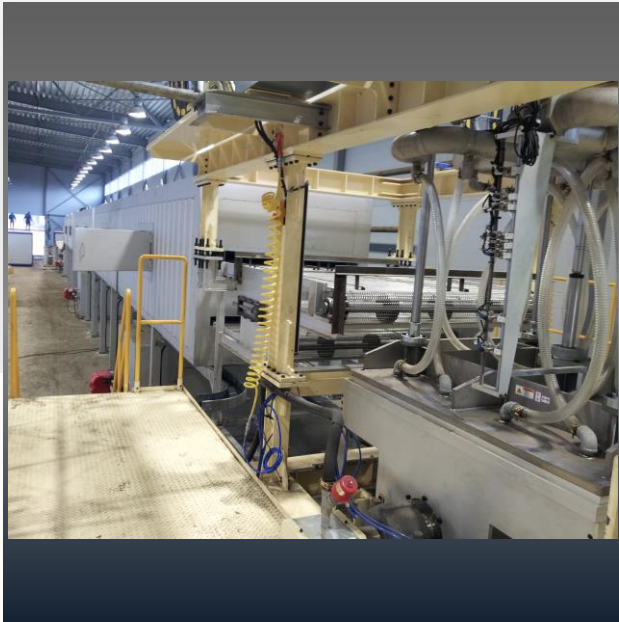
SYNOPEX WORLD INC.



SYNOPEX WORLD

SYNOPEX WORLD

Company overview



SYNOPEX WORLD INC.

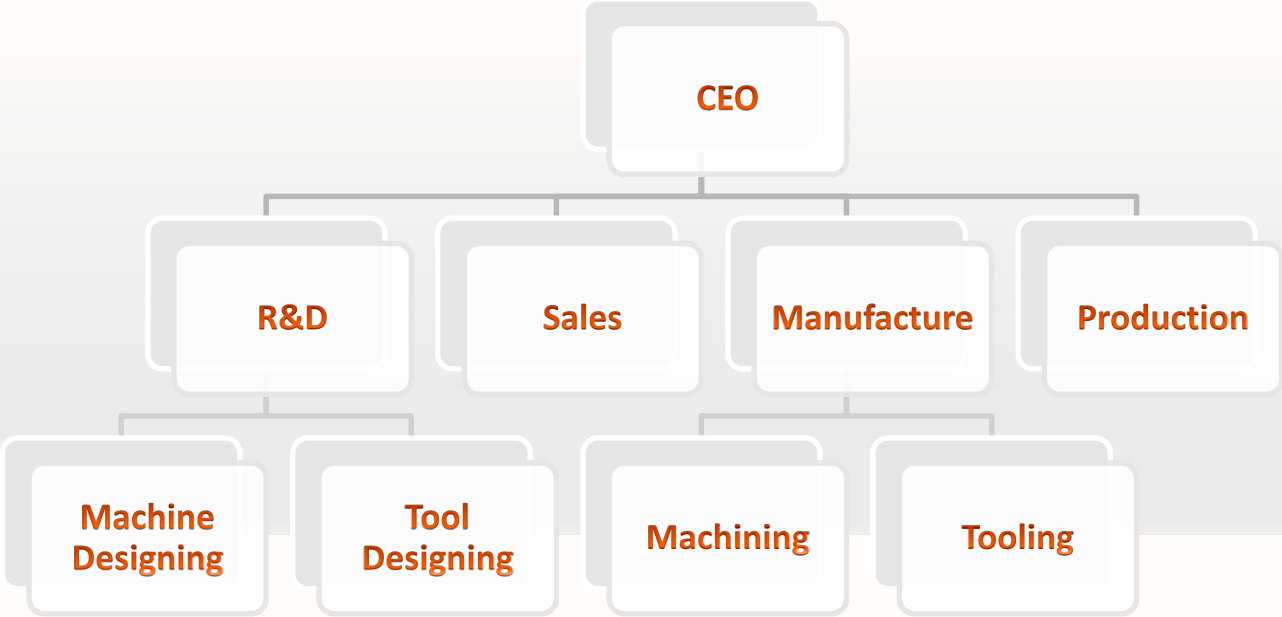
has been manufacturing and providing Pulp Mold System and Products to overseas. Putting responsibility and pride first, all staffs and family on SYNOPEX WORLD have devoted themselves to secure the company's own original technologies.

6th Floor, Dong-A Medical Building, #1140-1, Nae-dong,
Gimhae-si, Gyeongsangnam-do, South Korea, 50948

Tel. +82-51-986-7172 Fax. +82-51-986-7173

Organization Chart

Synopex World



PULP MOLD SYSTEM

Pulp Molding Machine



- We have created a range of Automatic pulp molding machines that are capable of producing high volume commodity (Egg Trays, Egg Cartons, Fruit Trays, Vegetable Packaging, Etc...) and medium volume industrial packaging products efficiently and economically. The systems are engineered to mold the Product efficiently minimizing any caliper differential and utilizing our multi nozzle single pass drying ovens to provide a stable drying environment.



Models

3 type of Main System

iFP-F Series

1 iFP-F Series is normally used in the field of producing Food trays (Sushi tray, Clamshell, lunch box, and various type of trays). Compared to our Industrial package machine, iFP-F Series will have faster productive rate, reduce of electrical power usage and reduce of mold cost (only for 2 stage machine) as well.

iFP-W Series

2 iFP-W Series dries the final product through a Drying Furnace. The production rate is much faster than the Dry type, however the final product slightly has the chance to be deformed. Normally the final product will be used in the area where the required quality is lower than the quantity.

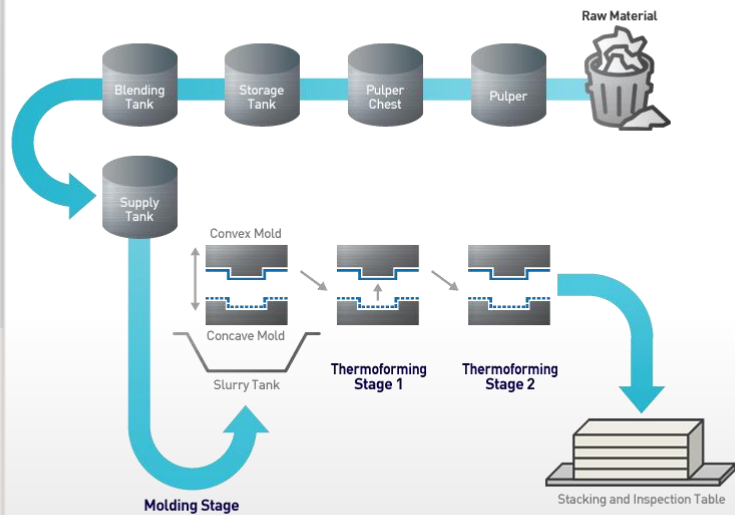
iFP U:LTRA System

3 iFP U:LTRA Series has been designed for high volume production, minimizing labor and maximizing production efficiency. This system is designed for high volume production runs for Lunch tray, Clamshell, Lunch box, fruit packaging (for soft fruits where surface quality is critical to avoid bruising of the fruit.), medical disposables, other type of food service products and etc..

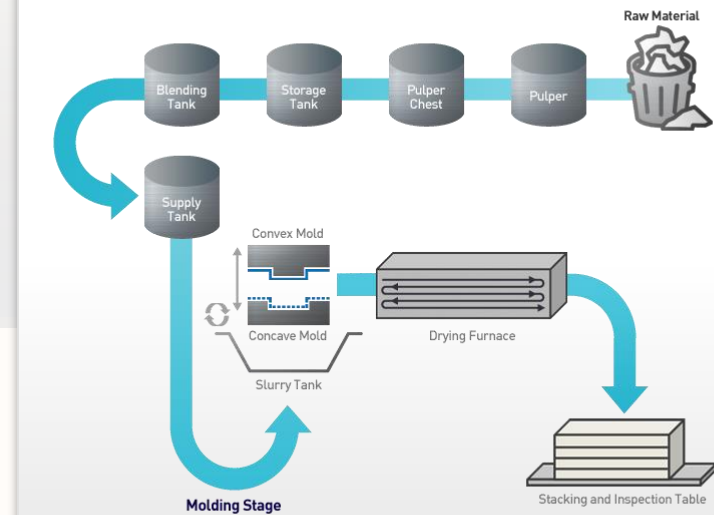
Process

Production process

iFP-F / iFP U:LTRA Series



iFP-W Series



Pulp Molded Products (PMP)

Various shaped and sized products

For Industrials

1

Buffer(cushion) for electronics, Medical disposables, Seed tray/pot and etc.

For Food Service

2

Food tray, Lunch box, Clamshell, Egg tray and carton and etc.

Customized Products

3

New designed product according to request of client.

We have been controlling the process of product design and tool making ourselves.

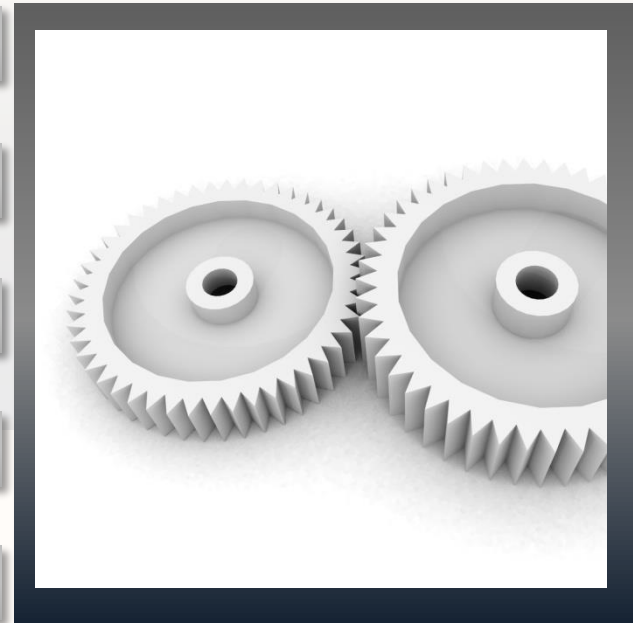
We can engineer the product design to provide maximum performance. Utilizing years of experience and a variety of proven geometric shapes, **SYNOPEW WORLD** will provide the most economical and performance efficient solution.



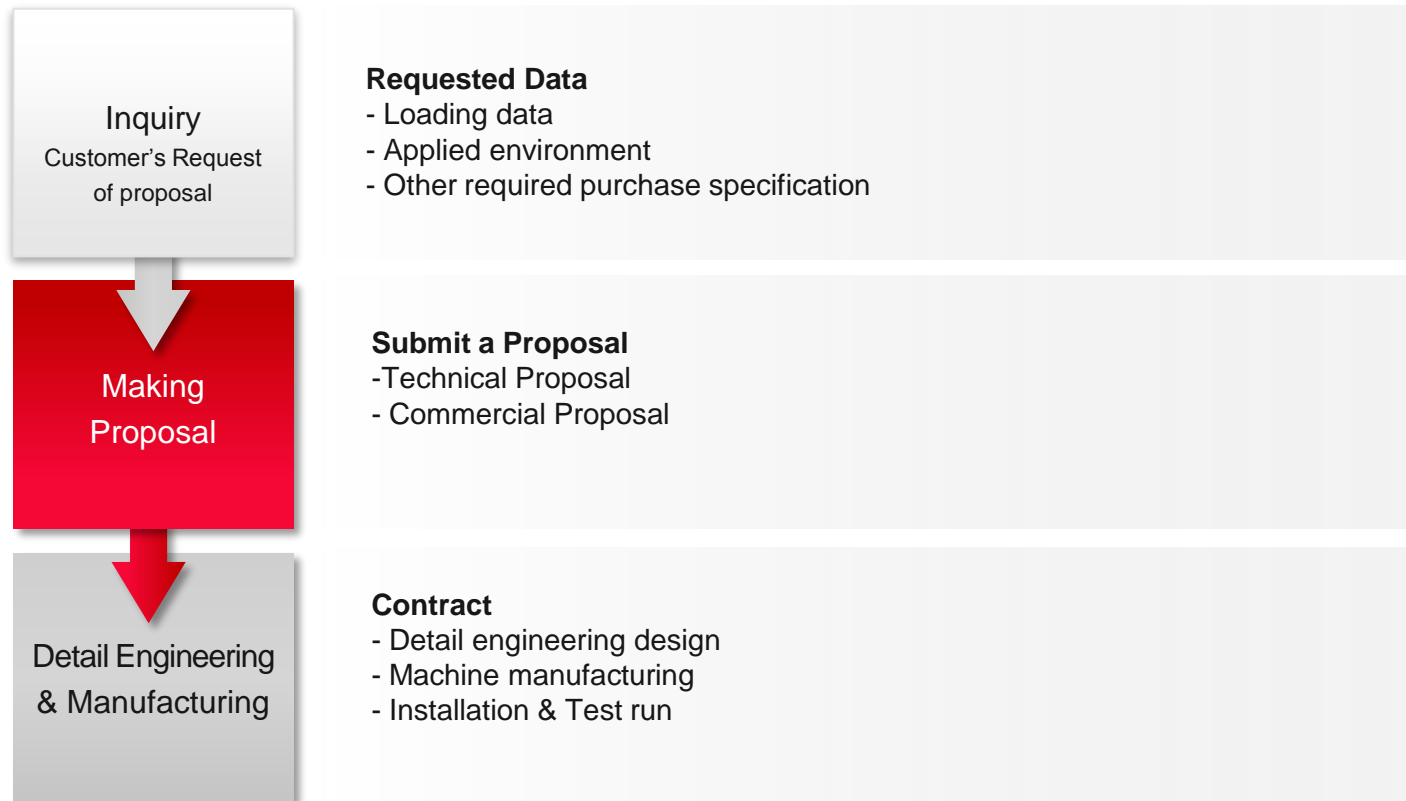
Special Machine for PMP

Optional Machines

- ✓ 1 After Hot Pressing Machine
- ✓ 2 Laminating Machine
- ✓ 3 Die Cutting Machine
- ✓ 4 Printing Machine
- ✓ 5 Stacking Machine

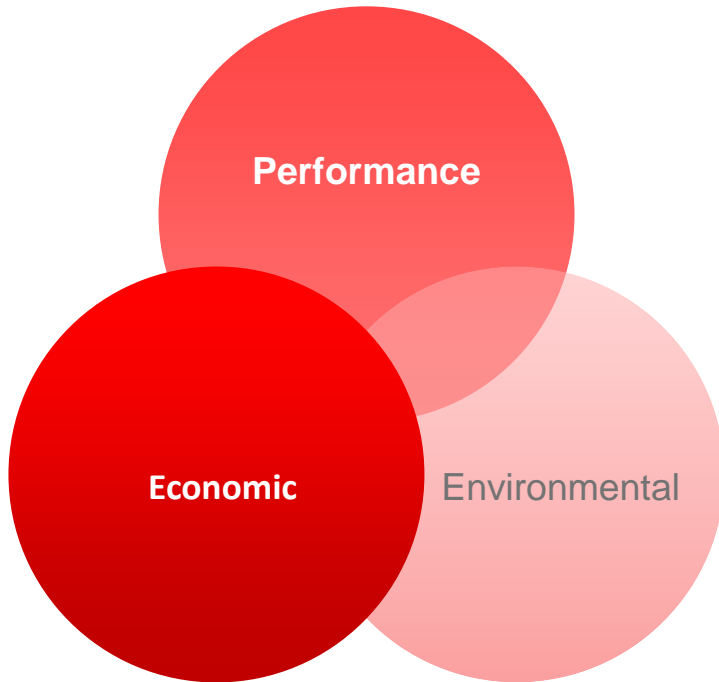


Engineering Procedure



The Benefits of PMP

Pulp Molded Products



1. Performance

- 1) Excellent bracing, blocking and cushioning protection
- 2) Unaffected by extreme temperatures
- 3) Water resistant
- 4) Electrically neutral

2. Economic

- 1) Inexpensive and stable raw material sources
- 2) Affordable new developments costs
- 3) Designed to nest – for reduced shipping and storage costs
- 4) Formed to shape – no assembly required

3. Environmental

- 1) 100% post-industrial raw materials
- 2) Open air drying
- 3) No waste water
- 4) Zero manufacturing waste
- 5) Final packaging is 100% recyclable

Contact Info.

6th Floor, Dong-A Medical Building, #1140-1, Nae-dong,
Gimhae-si, Gyeongsangnam-do, Republic of Korea, 50948

Tel. +82-51-986-7172 Fax. +82-51-986-7173

<http://www.synopexworld.com>

info@synopexworld.com, synopexworld@gmail.com

